

## SS SERIES



### 1. FEATURES

1. Compact build carbon steel housings, containing
2. 2, 3, 4, 5 or 6 filter elements.
3. Effectively removes all the particles that are usually very difficult to remove with conventional filters, and performs a total cleaning of the oil by removing solid particles, absorbing water and eliminating sludge and other oil oxidation residues.
4. The housings have a strong lid and can handle pressure up to 15 bar system pressure.
5. Available in 4 sizes and can be fitted with all the different filter element series.
6. Ideal for high flow filter rigs. Flow rates up to 60 l/m (3600 l/hour).
7. Typical filter housings for marine applications.
8. In combination with the X-series elements suitable for high viscosity oil up to 600 cSt.

### 2. BENEFITS

1. Compact build carbon steel housings, containing 2, 3, 4, 5 or 6 filter elements.
2. Effectively removes all the particles that are usually very difficult to remove with conventional filters, and performs a total cleaning of the oil by removing solid particles, absorbing water and eliminating sludge and other oil oxidation residues.

**Neptunus Power Plant Services Pvt. Ltd.**

A-554, TTC Industrial Area, MIDC, Mahape, Navi Mumbai – 400 710, India

Checklist No. QMS-L3-ENG-07, REV:0 | Page 1 of 3

3. The housings have a strong lid and can handle pressure up to 15 bar system pressure.
4. Available in 4 sizes and can be fitted with all the different filter element series.
5. Ideal for high flow filter rigs. Flow rates up to 60 l/m (3600 l/hour).
6. Typical filter housings for marine applications.
7. In combination with the X-series elements suitable for high viscosity oil up to 600 cSt.

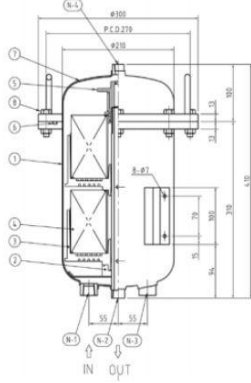
### 3. TYPICAL APPLICATION

1. Large volume systems.
2. Lube systems and high viscosity systems.
3. For high flow filter rigs.
4. Can be combined with suction filters, 1st stage pre-filters and centrifuges to build custom made solutions.

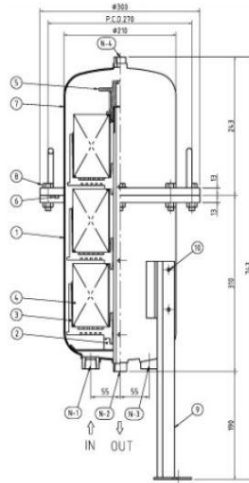
### 4. TECHNICAL SPECIFICATION

MODEL	SS102	SS103	SS104	SS305	SS306	SS12PF20
Article nr.	TR-11400	TR-11410	TR-11420	TR-10515	TR-10520	TR-12660
Flow rates with 32 cSt. oil	~6,0 l/m	~9,0 l/m	~15,0 l/m	35-45 l/m	50~60 l/m	30~60 l/m
Thread In/Out	3/8" IN and OUT			1" IN AND OUT		
Element type	M100, E100, X100, D100, WE100 Height 114 mm	M100, E100, X100 Height 80 mm	M300, E300, X300, D300 Height 114 mm	M300, E300, X300 Height 80 mm	PF20, various micron rating	
No. of elements	2	3	4	5	6	12
Max pressure	Max. pressure 4,5 bar - Burst pressure 15 bar					
Weight kg	18	22	22	89	87	78
Dimension mm	300 x 300 x 600	300 x 300 x 743	300 x 300 x 743	480 x 480 x 1250	480 x 480 x 1250	480 x 480 x 1250

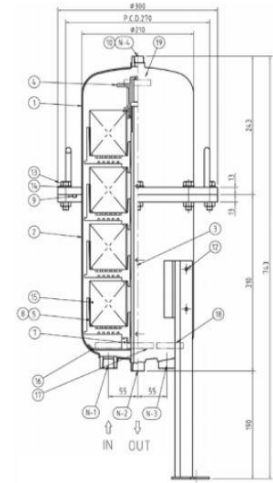
## 5. DIMENSIONS AND PARTS



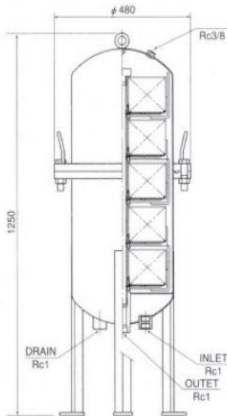
SS102



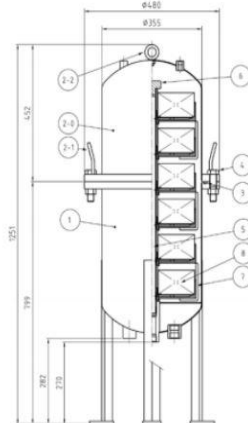
SS103



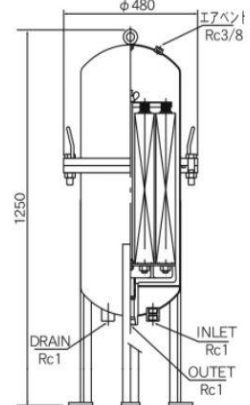
SS104



SS305



SS306



SS12PF20