

## SE SERIES



### 1. FEATURES

1. Compact and light off-line bypass oil cleaners.
2. 3-in1 Oil Filtration = effectively removes all the particles that are very difficult to remove with full flow filters, and performs an absolute Oil Cleaning by removing solid particles, absorbing water and eliminating sludge and oil oxidation residues.
3. Built around a very compact power pack, SE-filters are connected off-line to an oil reservoir.
4. Low running cost, easy installation & maintenance.
5. Available in various setups, various motor versions and ATEX certified.

### 2. ENVIRONMENTAL PROTECTION

1. Triple R filters effectively clean the oil (down to NAS 6 or ISO 15/12) and stabilize the oil condition.

2. That results in a significant increase of oil life and a significant reduction of oil consumption and oil disposal cost.
3. Practice has proven that 50.000 hours of operation, or oil usage for up to 10 years can be achieved while maintaining all the oil properties.

### **3. BENEFITS**

1. Improves productivity and machine reliability.
2. Prevents breakdowns to the hydraulic equipment.
3. Longer life of all hydraulic components, pumps, servo-valves and other equipment.
4. Saves significantly on oil consumption by extending oil life, up to 50.000 hrs. or 10 years.
5. Very important reduction of the oil consumption cost and the resulting waste oil expenses.
6. Discharges the very expensive full flow filters and extends their life (50% - 80% cost saving!).
7. Significant reduction of maintenance expenditures.

### **4. TYPICAL APPLICATIONS**

1. Injection moulding machines
2. Die-casting machines, metal working machines, like bending-, cutting-, punching machines.
3. All hydraulic systems fitted with proportional or servo-valves- and other dirt-sensitive components.
4. Also available for Diesel fuel, high viscosity oil or water glycol fluids.

## 5. TECHNICAL SPECIFICATION

MODEL *	SE-100-1R	SE-100-2R	SE-100-4R	SE-100-6R
Flow rate	2,5 l/m	5,0 l/m	9,0 l/m	12,0 l/m
Motor	230Vx1 or 400Vx3, 50/60Hz			
Power	0,12 kW (230V) - 0,18 kW (400V)		0.37 kW	
Thread In/Out	1/2" IN and OUT			3/4" IN - 1/2" OUT
Element type	100 size, M - E - X - D - WE type			
Nr. of elements	1	2	4	6
Max pressure	pressure relief set at 6.0 bar			
Weight kg	17,4	23,0	40,0	50,0
Dimension mm	385 x 230 x 460	470 x 400 x 370	610 x 470 x 370	1080 x 470 x 370

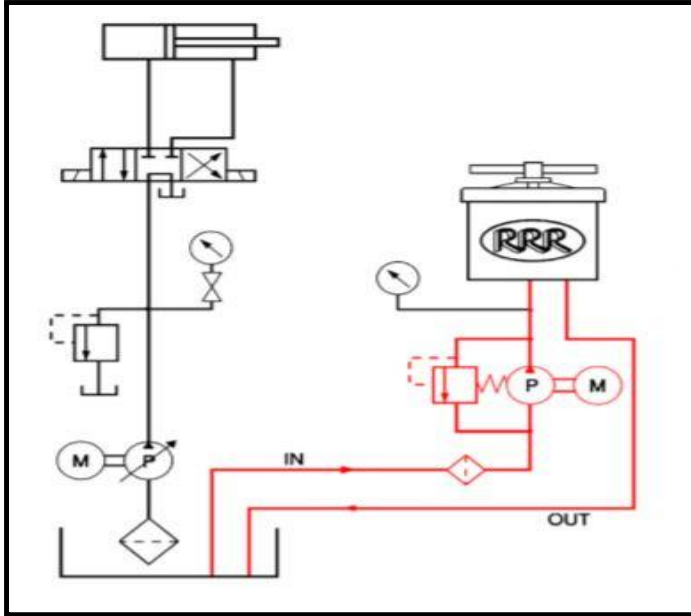
**Table 1 :** Technical specifications

\*Above table is showing the most current models. Models for Diesel fuel, high viscosity oil, water glycol fluids, phosphate ethers are available too. Also various setups, motor versions and ATEX certified systems.

## 6. FILTER MODEL SELECTION

MODEL *	500 LITER	750 L	1000 L	1500 L	2000 L	4000 L	6000 L
SE100 1R							
SE 100 2R							
SE 100 4R							
SE 100 6R							

## 7. CONNECTING OFF-LINE TO AN OIL RESERVOIR



**Figure 1 : Installation**